

Commercial



Residential



AC Product Catalogue

SAMSUNG

Referensi Proyek

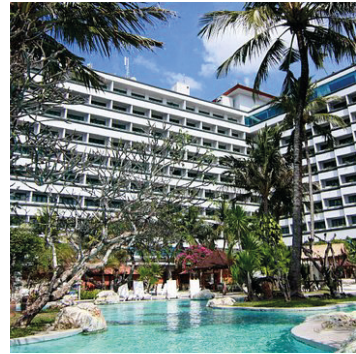
Gedung Perkantoran
Ciputra International



Kafe & Restoran
HokBen



Hotel
Grand Inna Sanur



Pabrik
Flextronic Batam



Apartemen
Saumata Alam Sutera



Fasilitas Kesehatan
RS UPT Vertikal Surabaya



Fasilitas Umum
LRT Jakarta



Lembaga Pendidikan
Universitas Indonesia



Pendingin Komersial

WindFree™ Cassete

WindFree™ 4Way Cassete



15,700

Lubang Mikro
WindFree™
4Way Cassete

9,000

Lubang Mikro
WindFree™ Mini
4Way Cassete

Samsung **WindFree™ 4Way Cassete** menawarkan teknologi **WindFree™ Cooling** yang mampu mendinginkan ruangan secara efektif, tanpa bising, dan tanpa angin langsung yang dapat mengganggu aktivitas Anda. Menghembuskan udara **melalui 15,700 lubang mikro** pada panelnya menghasilkan udara yang lembut dan menyebar.

WindFree™ 1Way Cassete



Desain inovatif dari Samsung **WindFree™ 1Way Cassete** mampu **menghemat biaya pemasangan dan meningkatkan fleksibilitas pemasangan AC**. Karena tingginya yang hanya 135mm dengan lebar 950mm, unit ini cocok digunakan di area dengan ukuran langit-langit yang terbatas dan dapat dipasang hampir di mana saja.

360 Cassete

Inovasi desain melingkar



Samsung **360 Cassete** menawarkan inovasi terbaru dalam memberikan kenyamanan di setiap sudut ruangan. Dilengkapi dengan teknologi **omni-directional outlets** yang mampu menyebarkan udara sejuk ke seluruh sudut ruangan, serta desain melingkar dengan gaya modern minimalisnya, sangat cocok digunakan di berbagai desain interior.

Distribusi udara yang merata



Tidak seperti AC Cassete konvensional 4 arah yang memiliki aliran udara tidak rata, Samsung **360 Cassete** memiliki desain **bladeless** yang memungkinkan udara menyebar ke segala arah hingga ke sudut ruangan dengan lembut, membuat Anda merasa nyaman tanpa ada sensasi udara dingin yang menusuk kulit.



360 Cassette

- 360° Air Flow
- Fan Speed Adjustment for High Ceiling
- Smart Comfort Operation
- Innovative Circular Design

DIGITAL INVERTER TECHNOLOGY

Single Phase

Model Code	Indoor Unit	AC052TN4PKC/EA	AC071TN4PKC/EA	AC100TN4PKC/EA	AC120TN4PKC/EA	AC140TN4PKC/EA
	Outdoor Unit	AC052TXADKC/EA	AC071TXADKC/EA	AC100TXADKC/EA	AC120TXADKC/EA	AC140TXADKC/EA
System	Mode	COOLING ONLY	COOLING ONLY	COOLING ONLY	COOLING ONLY	COOLING ONLY
Capacity	Cooling (Btu/h)	3.410/17.000/20.470	7.510/24.000/29.000	10.240/34.000/40.940	11.940/41.500/47.770	11.940/45.500/52.890
Power Input (nominal)	Cooling (1)	0.33 / 1.41 / 2.1 kW	0.35 / 2.185 / 3.6 kW	0.6 / 3.125 / 4.7 kW	0.8 / 3.67 / 5.3 kW	0.8 / 4.42 / 6.4 kW
Current Input (nominal)	Cooling (1)	1.5/6.7/9.5 A	2.0/10.1/16.0 A	3.0/14.8/20.4 A	3.7/16.7/23.0 A	3.7/20.4/28.0 A
Power	MCA [A]	21.5 A	21.5 A	26.0 A	34.0 A	34.0 A
	MFA [A]	25.0 A	25.0 A	30.0 A	40.0 A	40.0 A
Energy Efficiency	EER (Nominal Cooling)	3.55	3.25	3.2	3.3	3.03
Piping Connections	Liquid Pipe (Φ, inch)	1/4"	1/4"	3/8"	3/8"	3/8"
	Gas Pipe (Φ, inch)	1/2"	5/8"	5/8"	5/8"	5/8"
	Installation Max. Length (m)	30 m	50 m	50 m	75 m	75 m
	Installation Max. Height (m)	20 m	30 m	30 m	30 m	30 m
Refrigerant	Type	R410A	R410A	R410A	R410A	R410A
	Factory Charging (kg)	1.30 kg	2.00 kg	3.00 kg	3.40 kg	3.40 kg
Power Supply (Indoor Unit) [Φ, #, V, Hz]		1,220-240,50	1,220-240,50	1,220-240,50	1,220-240,50	1,220-240,50
External Dimension (Indoor Unit)	Net Weight (kg)	20.2 kg	20.2 kg	25.5 kg	25.5 kg	25.5 kg
	Net Dimensions (WxHxD) (mm)	947 x 281 x 947 mm	947 x 281 x 947 mm	947 x 365 x 947 mm	947 x 365 x 947 mm	947 x 365 x 947 mm
Panel Size	Panel model	PC4NUNMAN	PC4NUNMAN	PC4NUNMAN	PC4NUNMAN	PC4NUNMAN
	Panel Net Weight (kg)	3.6 kg	3.6 kg	3.6 kg	3.6 kg	3.6 kg
	Net Dimensions (WxHxD) (mm)	1000 x 66 x 1000 mm	1000 x 66 x 1000 mm	1000 x 66 x 1000 mm	1000 x 66 x 1000 mm	1000 x 66 x 1000 mm
Power Supply (Outdoor Unit) [Φ, #, V, Hz]		1,220-240,50	1,220-240,50	1,220-240,50	1,220-240,50	1,220-240,50
External Dimension (Outdoor Unit)	Net Weight (kg)	40.5 kg	52.5 kg	71.0 kg	86.5 kg	86.5 kg
	Net Dimensions (WxHxD) (mm)	880 x 638 x 310 mm	880 x 798 x 310 mm	940 x 998 x 330 mm	940 x 1210 x 330 mm	940 x 1210 x 330 mm



Default:



Round Panel White
PC4NUNMAN

Options*:



Square Panel White
PC4NUNMAN



Round Panel Black
PC4NBNMAN



Square Panel Black
PC4NBNMAN

*Additional charge applied

DIGITAL INVERTER TECHNOLOGY

Three Phase

Model Code	Indoor Unit	AC100TN4PKC/EA	AC120TN4PKC/EA	AC140TN4PKC/EA
	Outdoor Unit	AC100TXADNC/EA	AC120TXADNC/EA	AC140TXADNC/EA
System	Mode	COOLING ONLY	COOLING ONLY	COOLING ONLY
Capacity	Cooling (Btu/h)	10,240/34,000/40,940	11,940 / 41,500 / 47,770	11,940 / 45,500 / 52,890
Power Input (nominal)	Cooling (1)	0.6 / 3.125 / 4.7 kW	0.8/3.67/5.5 kW	0.8/4.42/6.4 kW
Current Input (nominal)	Cooling (1)	1.5/5.2/7.1 A	2.1/5.9/8.8 A	2.1/7.1/9.5 A
Power	MCA [A]	18.1 A	18.1 A	18.1 A
	MFA [A]	18.1 A	18.1 A	18.1 A
Energy Efficiency	EER (Nominal Cooling)	3.2	3.3	3.03
Piping Connections	Liquid Pipe (Φ, inch)	3/8"	3/8"	3/8"
	Gas Pipe (Φ, inch)	5/8"	5/8"	5/8"
	Installation Max. Length (m)	50 m	75 m	75 m
	Installation Max. Height (m)	30 m	30 m	30 m
Refrigerant	Type	R410A	R410A	R410A
	Factory Charging (kg)	3.00 kg	3.40 kg	3.40 kg
Power Supply (Indoor Unit) [Φ, #, V, Hz]		1,2,220-240,50	1,2,220-240,50	1,2,220-240,50
External Dimension (Indoor Unit)	Net Weight (kg)	25.5 kg	25.5 kg	25.5 kg
	Net Dimensions (WxHxD) (mm)	947 x 365 x 947 mm	947 x 365 x 947 mm	947 x 365 x 947 mm
Panel Size	Panel model	PC4NUNMAN	PC4NUNMAN	PC4NUNMAN
	Panel Net Weight (kg)	3.6 kg	3.6 kg	3.6 kg
	Net Dimensions (WxHxD) (mm)	1000 x 66 x 1000 mm	1000 x 66 x 1000 mm	1000 x 66 x 1000 mm
Power Supply (Outdoor Unit) [Φ, #, V, Hz]		3,4,380-415,50	3,4,380-415,50	3,4,380-415,50
External Dimension (Outdoor Unit)	Net Weight (kg)	71.0 kg	86.5 kg	86.5 kg
	Net Dimensions (WxHxD) (mm)	940 x 998 x 330 mm	940 x 1210 x 330 mm	940 x 1210 x 330 mm



WindFree™ 4Way Cassette

- Big Blade, Long Wind
- Smart Comfort Operation
- WindFree™ Cooling with Micro Holes
- Low Energy Consumption

DIGITAL INVERTER TECHNOLOGY

Single Phase

Model Code	Indoor Unit	AC052TN4DKC/EA	AC071TN4DKC/EA	AC100TN4DKC/EA1	AC120TN4DKC/EA1	AC140TN4DKC/EA1
	Outdoor Unit	AC052TXADKC/EA	AC071TXADKC/EA	AC100TXADKC/EA	AC120TXADKC/EA	AC140TXADKC/EA
System	Mode	COOLING ONLY	COOLING ONLY	COOLING ONLY	COOLING ONLY	COOLING ONLY
Capacity	Cooling (Btu/h)	3.410/17.000/20.470	7.510/24.000/29.000	10.240/34.000/40.940	11.940/41.500/47.770	11.940/45.500/52.890
Power Input (nominal)	Cooling (1)	0.33 / 1.41 / 2.1 kW	0.35 / 2.185 / 3.6 kW	0.6 / 3.125 / 4.7 kW	0.8 / 3.67 / 5.3 kW	0.8 / 4.42 / 6.4 kW
Current Input (nominal)	Cooling (1)	1.5/6.7/9.5 A	2.0/10.1/16.0 A	3.0/14.8/20.4 A	3.7/16.7/23.0 A	3.7/20.4/28.0 A
Power	MCA [A]	21.5 A	21.5 A	26.0 A	34.0 A	34.0 A
	MFA [A]	25.0 A	25.0 A	30.0 A	40.0 A	40.0 A
Energy Efficiency	EER (Nominal Cooling)	3.55	3.25	3.2	3.3	3.03
Piping Connections	Liquid Pipe (Φ, inch)	1/4"	1/4"	3/8"	3/8"	3/8"
	Gas Pipe (Φ, inch)	1/2"	5/8"	5/8"	5/8"	5/8"
	Installation Max. Length (m)	30 m	50 m	50 m	75 m	75 m
	Installation Max. Height (m)	20 m	30 m	30 m	30 m	30 m
Refrigerant	Type	R410A	R410A	R410A	R410A	R410A
	Factory Charging (kg)	1.30 kg	2.00 kg	3.00 kg	3.40 kg	3.40 kg
Power Supply (Indoor Unit) [Φ, #, V, Hz]		1,2,220-240,50	1,2,220-240,50	1,2,220-240,50	1,2,220-240,50	1,2,220-240,50
External Dimension (Indoor Unit)	Net Weight (kg)	14.5 kg	14.5 kg	20.0 kg	20.0 kg	20.0 kg
	Net Dimensions (WxHxD) (mm)	840 x 204 x 840 mm	840 x 204 x 840 mm	840 x 288 x 840 mm	840 x 288 x 840 mm	840 x 288 x 840 mm
Panel Size	Panel model	PC4NUFDAN	PC4NUFDAN	PC4NUFDAN	PC4NUFDAN	PC4NUFDAN
	Panel Net Weight (kg)	6.3 kg	6.3 kg	6.3 kg	6.3 kg	6.3 kg
	Net Dimensions (WxHxD) (mm)	950 x 48 x 950 mm	950 x 48 x 950 mm	950 x 48 x 950 mm	950 x 48 x 950 mm	950 x 48 x 950 mm
Power Supply (Outdoor Unit) [Φ, #, V, Hz]		1,2,220-240,50	1,2,220-240,50	1,2,220-240,50	1,2,220-240,50	1,2,220-240,50
External Dimension (Outdoor Unit)	Net Weight (kg)	40.5 kg	52.5 kg	71.0 kg	86.5 kg	86.5 kg
	Net Dimensions (WxHxD) (mm)	880 x 638 x 310 mm	880 x 798 x 310 mm	940 x 998 x 330 mm	940 x 1210 x 330 mm	940 x 1210 x 330 mm

R410A
Refrigerant



Wide
Blade



No!Dust



High
Lift-Up



Fresh Air



SubDuct



Wireless
Remote



DIGITAL INVERTER TECHNOLOGY

Three Phase

Model Code	Indoor Unit	AC100TN4DKC/EA3	AC120TN4DKC/EA3	AC140TN4DKC/EA3
	Outdoor Unit	AC100TXADNC/EA	AC120TXADNC/EA	AC140TXADNC/EA
System	Mode	COOLING ONLY	COOLING ONLY	COOLING ONLY
Capacity	Cooling (Btu/h)	10.240 / 34.000 / 40.940	11.940 / 41.500 / 47.770	11.940 / 41.500 / 47.770
Power Input (nominal)	Cooling (1)	0.6/3.125/4.7 kW	0.8 / 3.67 / 5.5 kW	0.8 / 4.42 / 6.4 kW
Current Input (nominal)	Cooling (1)	1.5/5.2/7.1 A	2.1/5.9/8.8 A	2.1/7.1/9.5 A
Power	MCA [A]	18.1 A	18.1 A	18.1 A
	MFA [A]	18.1 A	18.1 A	18.1 A
Energy Efficiency	EER (Nominal Cooling)	3.2	3.2	3.03
Piping Connections	Liquid Pipe (Φ, inch)	3/8"	3/8"	3/8"
	Gas Pipe (Φ, inch)	5/8"	5/8"	5/8"
	Installation Max. Length (m)	50 m	75 m	75 m
	Installation Max. Height (m)	30 m	30 m	30 m
Refrigerant	Type	R410A	R410A	R410A
	Factory Charging (kg)	3.00 kg	3.40 kg	3.40 kg
Power Supply (Indoor Unit) [Φ, #, V, Hz]		1,2,220-240,50	1,2,220-240,50	1,2,220-240,50
External Dimension (Indoor Unit)	Net Weight (kg)	20.0 kg	20.0 kg	20.0 kg
	Net Dimensions (WxHxD) (mm)	840 x 288 x 840 mm	840 x 288 x 840 mm	840 x 288 x 840 mm
Panel Size	Panel model	PC4NUFDAN	PC4NUFDAN	PC4NUFDAN
	Panel Net Weight (kg)	6.3 kg	6.3 kg	6.3 kg
	Net Dimensions (WxHxD) (mm)	950 x 48 x 950 mm	950 x 48 x 950 mm	950 x 48 x 950 mm
Power Supply (Outdoor Unit) [Φ, #, V, Hz]		3,4,380-415,50	3,4,380-415,50	3,4,380-415,50
External Dimension (Outdoor Unit)	Net Weight (kg)	71.0 kg	86.5 kg	86.5 kg
	Net Dimensions (WxHxD) (mm)	940 x 998 x 330 mm	940 x 1210 x 330 mm	940 x 1210 x 330 mm



WindFree™ 1Way Cassette

- Big Blade, Long Wind
- Smart Comfort Operation
- WindFree™ Cooling with Micro Holes
- Slim Height 135 mm



DIGITAL INVERTER TECHNOLOGY

Single Phase

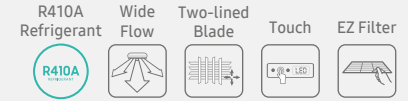
Model Code	Indoor Unit	AC035TN1DKC/EA	AC052TN1DKC/EA	AC071TN1DKC/EA
	Outdoor Unit	AC035TXADKC/EA	AC052TXADKC/EA	AC071TXADKC/EA
System	Mode	COOLING ONLY	COOLING ONLY	COOLING ONLY
Capacity	Cooling (Btu/h)	3,410 / 12,000 / 13,990	5,120 / 17,000 / 20,470	6,140 / 21,000 / 26,610
Power Input (nominal)	Cooling (1)	0.24/1.045/1.5 kW	0.3/1.47/2.1 kW	0.4/1.97/3.6 kW
Current Input (nominal)	Cooling (1)	1.6/5.4/7.5 A	1.7/7.1/9.5 A	2.3/9.3/16.0 A
Power	MCA [A]	11.5 A	21.5 A	21.1 A
	MFA [A]	12.7 A	25.0 A	25.0 A
Energy Efficiency	EER (Nominal Cooling)	3.35	3.4	3.1
Piping Connections	Liquid Pipe (Φ, inch)	1/4"	1/4"	1/4"
	Gas Pipe (Φ, inch)	3/8"	1/2"	5/8"
	Installation Max. Length (m)	20 m	30 m	50 m
	Installation Max. Height (m)	15 m	20 m	30 m
Refrigerant	Type	R410A	R410A	R410A
	Factory Charging (kg)	1.05 kg	1.30 kg	2.00 kg
Power Supply (Indoor Unit) [Φ, #, V, Hz]		1,2,220-240,50	1,2,220-240,50	1,2,220-240,50
External Dimension (Indoor Unit)	Net Weight (kg)	9.2 kg	13.4 kg	13.4 kg
	Net Dimensions (WxHxD) (mm)	970 x 135 x 410 mm	1200 x 138 x 450 mm	1200 x 138 x 450 mm
Panel Size	Panel model	PC1NWFMAN	PC1BWFMAN	PC1BWFMAN
	Panel Net Weight (kg)	4.3 kg	5.0 kg	5.0 kg
	Net Dimensions (WxHxD) (mm)	1198 x 35 x 500 mm	1410 x 35 x 500 mm	1410 x 35 x 500 mm
Power Supply (Outdoor Unit) [Φ, #, V, Hz]		1,2,220-240,50	1,2,220-240,50	1,2,220-240,50
External Dimension (Outdoor Unit)	Net Weight (kg)	30.0 kg	40.5 kg	52.5 kg
	Net Dimensions (WxHxD) (mm)	790 x 548 x 285 mm	880 x 638 x 310 mm	880 x 798 x 310 mm



AC030BNP AC048BNP

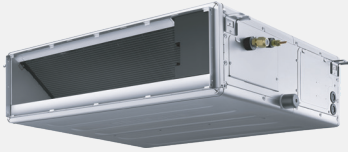
Floor standing

- Long & Wide Distance Air Flow
- Horizontal & Vertical Blade
- Touch Display Panel
- EZ Filter Cleaning



DIGITAL INVERTER TECHNOLOGY

		Single Phase	Three Phase
Model Code	Indoor Unit	AC030BNPDKC/TC	AC048BNPDKC/TC
	Outdoor Unit	AC030BXPDKC/TC	AC048BXPDKC/TC
System	Mode	COOLING ONLY	COOLING ONLY
Capacity	Cooling (Btu/h)	28.000	47.500
Power Input (nominal)	Cooling 1)	2.60 kW	4.32 kW
Current Input (nominal)	Cooling 1)	11.5 A	7.1 A
Power	MCA [A]	22 A	14 A
Energy Efficiency	MFA [A]	25 A	15 A
	EER (Nominal Cooling)	11,36	10,99
Piping Connections	Liquid Pipe (Φ, inch)	1/4"	3/8"
	Gas Pipe (Φ, inch)	5/8 m	5/8"
	Installation Max. Length (m)	50 m	75 m
	Installation Max. Height (m)	30 m	30 m
Refrigerant	Type	R410A	R410A
	Factory Charging (kg)	2 kg	2.9 kg
Power Supply (Indoor Unit) [Φ, #, V, Hz]		1,2,220-240,50/60	1,2,220-240,50/60
External Dimension (Indoor Unit)	Net Weight (kg)	30 kg	44.5 kg
	Net Dimensions (WxHxD) (mm)	525 x 1850x 320 mm	610 x 1850 x 400 mm
Power Supply (Outdoor Unit) [Φ, #, V, Hz]		1,2,220-240,50/60	3,4,380-415,50/60
External Dimension (Outdoor Unit)	Net Weight (kg)	52.5 kg	86.5 kg
	Net Dimensions (WxHxD) (mm)	880 x 798 x 310 mm	940 x 1210 x 330 mm



Global Duct Inverter

- The Slimmest and The Lightest Design
- 3-Way Service
- Automatic ESP Adjustment
- Easier Drain Pump Installation

DIGITAL INVERTER TECHNOLOGY

Single Phase

Model Code	Indoor Unit	AC035TNLDKC/EA	AC052TNLDKC/EA	AC071TNMDKC/EA	AC100TNMDKC/EA	AC120TNMDKC/EA	AC140TNMDKC/EA	AC160TNMDKC/EA
	Outdoor Unit	AC035TXADKC/EA	AC052TXADKC/EA	AC071TXADKC/EA	AC100TXADKC/EA	AC120TXADKC/EA	AC140TXADKC/EA	AC160TXADKC/EA
System	Mode	COOLING ONLY	COOLING ONLY	COOLING ONLY	COOLING ONLY	COOLING ONLY	COOLING ONLY	COOLING ONLY
Capacity	Cooling (Btu/h)	3,410 / 12,000 / 13,990	4,090 / 17,000 / 19,110	7,510 / 22,000 / 27,300	10,240 / 34,000 / 40,940	11,940 / 41,500 / 47,770	11,940 / 4,5500 / 52,890	14,670 / 54,000 / 61,420
Power Input (nominal)	Cooling 1)	0.24/1.075/1.5 kW	0.35/1.565/2.2 kW	0.35/2.13/3.6 kW	0.6/3.125/4.7 kW	0.8/3.67/5.3 kW	0.8/4.42/6.4 kW	0.95/5.215/6.8 kW
Current Input (nominal)	Cooling 1)	1.6/5.5/7.5 A	2.1/7.4/10.0 A	2.0/9.7/16.0 A	3.0/14.8/20.4 A	3.7/16.7/23.0 A	3.7/20.4/28.0 A	4.0/23.8/31.0 A
Power	MCA [A]	11.7 A	22.3 A	22.3 A	26.5 A	34.5 A	34.0 A	35.5 A
Energy Efficiency	MFA [A]	12.9 A	25.0 A	25.0 A	30.0 A	40.0 A	40.0 A	40.0 A
Piping Connections	EER (Nominal Cooling)	3.25	3.2	3.05	3.2	3.3	3.03	3.03
	Liquid Pipe (Φ, inch)	1/4"	1/4"	1/4"	3/8"	3/8"	3/8"	3/8"
	Gas Pipe (Φ, inch)	3/8"	1/2"	5/8"	5/8"	5/8"	5/8"	3/4"
	Installation Max. Length (m)	20 m	30 m	50 m	50 m	75 m	75 m	75 m
Refrigerant	Installation Max. Height (m)	15 m	20 m	30 m	30 m	30 m	30 m	30 m
	Type	R410A	R410A	R410A	R410A	R410A	R410A	R410A
	Factory Charging (kg)	1.05 kg	1.30 kg	2.00 kg	3.00 kg	3.40 kg	3.40 kg	3.80 kg
Power Supply (Indoor Unit) [Φ, #, V, Hz]		1,2,220-240,50	1,2,220-240,50	1,2,220-240,50	1,2,220-240,50	1,2,220-240,50	1,2,220-240,50	1,2,220-240,50
External Dimension (Indoor Unit)	Net Weight (kg)	14.8 kg	26.5 kg	26.5 kg	38.5 kg	38.5 kg	38.5 kg	53.5 kg
	Net Dimensions (WxHxD) (mm)	700 x 199 x 440 mm	850 x 250 x 700 mm	850 x 250 x 700 mm	1300 x 300 x 700 mm	1300 x 300 x 700 mm	1300 x 300 x 700 mm	1200 x 360 x 650 mm
Power Supply (Outdoor Unit) [Φ, #, V, Hz]		1,2,220-240,50	1,2,220-240,50	1,2,220-240,50	1,2,220-240,50	1,2,220-240,50	1,2,220-240,50	1,2,220-240,50
External Dimension (Outdoor Unit)	Net Weight (kg)	30.0 kg	40.5 kg	52.5 kg	71.0 kg	86.5 kg	86.5 kg	96.0 kg
	Net Dimensions (WxHxD) (mm)	790 x 548 x 28 mm	880 x 638 x 310 mm	880 x 798 x 310 mm	940 x 998 x 330 mm	940 x 1210 x 330 mm	940 x 1210 x 330 mm	940 x 1420 x 330 mm

R410A
Refrigerant



Slimmest
Size



EZ Drain
Pump



Auto E.S.P



3-way
Service



Wired
Remote



DIGITAL INVERTER TECHNOLOGY

Three Phase

Model Code	Indoor Unit	AC100TNMDKC/EA3	AC120TNMDKC/EA3	AC140TNMDKC/EA3	AC160TNMDKC/EA3
	Outdoor Unit	AC100TXADNC/EA	AC120TXADNC/EA	AC140TXADNC/EA	AC160TXADNC/EA
System	Mode	COOLING ONLY	COOLING ONLY	COOLING ONLY	COOLING ONLY
Capacity	Cooling (Btu/h)	10,240 / 34,000 / 40,940	11,940 / 41,500 / 47,770	11,940 / 4,5500 / 52,890	14,670 / 54,000 / 61,420
Power Input (nominal)	Cooling 1)	0.6/3.125/4.7 kW	0.8/3.67/5.5 kW	0.8/4.42/6.4 kW	1.1/5.215/6.8 kW
Current Input (nominal)	Cooling 1)	1.5/5.2/7.1 A	2.1/5.9/8.8 A	2.1/7.1/9.5 A	2.0/8.4/10.0 A
Power	MCA [A]	18.1 A	18.1 A	18.1 A	19.6 A
Energy Efficiency	MFA [A]	18.1 A	18.1 A	18.1 A	19.6 A
Piping Connections	EER (Nominal Cooling)	3.2	3.3	3.03	3.03
	Liquid Pipe (Φ, inch)	3/8"	3/8"	3/8"	3/8"
	Gas Pipe (Φ, inch)	5/8"	5/8"	5/8"	3/4"
	Installation Max. Length (m)	50 m	75 m	75 m	75 m
Refrigerant	Installation Max. Height (m)	30 m	30 m	30 m	30 m
	Type	R410A	R410A	R410A	R410A
	Factory Charging (kg)	3.00 kg	3.40 kg	3.40 kg	3.80 kg
Power Supply (Indoor Unit) [Φ, #, V, Hz]		1,2,220-240,50	1,2,220-240,50	1,2,220-240,50	1,2,220-240,50
External Dimension (Indoor Unit)	Net Weight (kg)	38.5 kg	38.5 kg	38.5 kg	53.5 kg
	Net Dimensions (WxHxD) (mm)	1300 x 300 x 700 mm	1300 x 300 x 700 mm	1300 x 300 x 700 mm	1200 x 360 x 650 mm
Power Supply (Outdoor Unit) [Φ, #, V, Hz]		3,4,380-415,50	3,4,380-415,50	3,4,380-415,50	3,4,380-415,50
External Dimension (Outdoor Unit)	Net Weight (kg)	71.0 kg	86.5 kg	86.5 kg	96.0 kg
	Net Dimensions (WxHxD) (mm)	940 x 998 x 330 mm	940 x 1210 x 330 mm	940 x 1210 x 330 mm	940 x 1210 x 330 mm

Hemat energi dengan Digital Inverter Boost

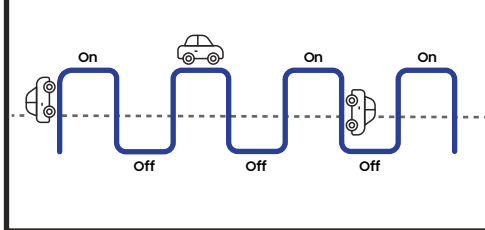
Teknologi Digital Inverter Boost menghasilkan kinerja AC yang lebih hemat energi dan lebih senyap untuk kenyamanan yang lebih baik.

AC non inverter (RAC Standard AR09BGH)		AC Inverter (RAC Inverter AR10CYK)
0 kW	Konsumsi daya minimal	180 watt = 0,18 kW
824 Watt = 0,824 kW	Konsumsi daya maksimal	1.000 watt = 1 kW
0,824 kW x 1 Jam x 80% = 0,66 kWh	Daya listrik 1 jam pertama	1 kW x 1 Jam = 1 kWh
0,824 kW x 7 Jam x 80% = 4,61 kWh	Daya listrik 7 jam selanjutnya	0,18 kW x 7 Jam = 1,26 kWh
(0,66 + 4.61) kWh x Rp1.500 = Rp7.910	Biaya listrik per hari	(1 + 1,26) kWh x Rp1.500 = Rp3.390
Rp7.910 x 30 hari = Rp237.312	Biaya listrik per bulan	Rp3.390 x 30 hari = Rp101.700
Rp237.312 x 12 bulan = Rp2.847.744	Biaya listrik per tahun	Rp237.312 x 12 bulan = Rp1.220.400

Hemat 57%*

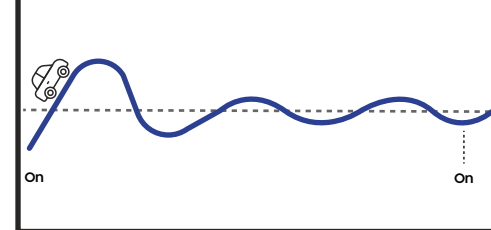
Dari simulasi di atas dapat disimpulkan AC Inverter dapat menghemat biaya listrik anda lebih dari 50%* dibandingkan dengan AC Non-Inverter. Meskipun harga AC Inverter lebih tinggi ± 2 juta Rupiah**, namun dalam waktu 1,5 tahun investasi tersebut akan terbayarkan dan Anda akan menikmati hemat listrik dalam jangka panjang.

Cara Kerja AC Non Inverter



AC non-inverter mengonsumsi daya listrik lebih tinggi karena adanya proses fluktuasi pendinginan terus menerus hingga mencapai suhu yang diinginkan.

Cara Kerja AC Inverter



AC inverter tidak mengalami fluktuasi dan menggunakan energi lebih sedikit karena menggunakan Magnet Neodymium dan Muffler untuk kinerja lebih bertenaga.

*Berdasarkan simulasi internal dengan penggunaan AC rata-rata 8 jam per hari pada model AR09BGH dibandingkan dengan model AR10CYK. Diasumsikan tarif listrik Rp1,500/kWh.
**Berdasarkan selisih RRP untuk SKU AR09BGH & AR10CYK.

Sistem Pendingin Residensial

Kenapa memilih
AC Inverter WindFree™?

4K **2 in 1** Air Conditioning & Purifying

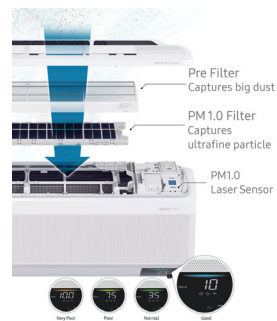
1 Kehematan

WindFree™ menggunakan energi listrik lebih hemat, mulai dari 180 Watt¹, sehingga mendapatkan rating CSPF bintang 5. Dengan teknologi Digital Inverter Boost, unit AC bisa mempertahankan suhu yang diinginkan tanpa harus mematikan dan menyalakan unit AC sehingga energi yang diperlukan hemat lebih dari 50%².



2 Kesehatan

WindFree™ Ultra Air Conditioner dilengkapi dengan Air Purification PM1.0 Filter³ yang mampu menangkap debu halus dan mensterilkan lebih dari 99% bakteri⁴. Filter ini juga dapat dicuci sehingga Anda tidak perlu membeli filter baru untuk perawatannya, membuat Anda menjadi lebih hemat.



3 Kenyamanan

Teknologi WindFree™ Cooling menciptakan aliran udara yang jauh lebih lembut dan ringan, dan dapat didistribusikan secara merata melalui 23,000 lubang mikro. Anda dapat merasakan udara sejuk yang nyaman di rumah sehari-hari.



4 Kemudahan

Anda lebih mudah mengontrol AC melalui smartphone dengan aplikasi SmartThings. Menggunakan aplikasi SmartThings, Anda dapat mengendalikan dari jarak jauh, menyalakan dan mematikan, kontrol fungsi, dan jadwalkan pengoperasiannya kapan pun dan di mana pun.



¹ Berdasarkan Samsung Internal Specification Data:

- Air Conditioner berada di kondisi Temperatur Standart 22°C – 24°C

- Minimal frekuensi kompresor 50Hz – 35Hz

² Berdasarkan simulasi internal dengan penggunaan AC rata-rata 8 jam per hari pada model AR09BGH dibandingkan dengan model AR10CYK. Diasumsikan tarif listrik Rp1,500/kWh.

³ Hanya tersedia di beberapa model: AR10CYKAAWKNSE, AR12CYKAAWKNSE, dan AR18CYKAAWKNSE.

⁴ Berdasarkan kesaksian independen oleh Intertek. Menghilangkan 99% bakteri tertentu, termasuk Staphylococcus aureus dan Escherichia coli. Hasil dapat bervariasi tergantung pada faktor lingkungan dan penggunaan individu.



Inverter WindFree™ Ultra



DIGITAL INVERTER TECHNOLOGY

Model Code				AR10CYKAAWKNSE	AR12CYKAAWKNSE	AR18CYKAAWKNSE
Performance	Capacity (Btu/h)	Cooling		9.000 (3.000 - 11.500)	12.000 (3.000 - 13.600)	18.000 (5.200 - 22.500)
	Capacity (kW)	Cooling		2.64 (0.88 - 3.37)	3.52 (0.88 - 3.99)	5.28 (1.52 - 6.59)
	ERR/COP (Btu/hW)	EER (Cooling)		12,86	11,27	11,84
	ERR/COP (W/W)	EER (Cooling)		3,77	3,3	3,47
Electrical Data	Energy Efficiency	Energy Efficiency Class for cooling (Grade)		★★★★★	★★★★★	★★★★★
		Operating Current (Cooling, A)		3,8	5,2	7,2
		Power Consumption (Cooling, W)		180 / 700 / 1.000	180 / 1.065 / 1.200	350 / 1.520 / 2.000
	Power Source V/ Hz/ Ø			220 - 240V/50Hz/1P	220 - 240V/50Hz/1P	220 - 240V/50Hz/1P
Physical Specification	Dimension	Net Dimensions (WxHxD)	Indoor	820 x 345 x 215	820 x 345 x 215	889 x 345 x 215
			Outdoor	660 x 475 x 242	660 x 475 x 242	790 x 548 x 285
		Gross Dimensions (WxHxD)	Indoor	880 x 410 x 290	880 x 410 x 290	1115 x 410 x 290
			Outdoor	778 x 525 x 331	778 x 525 x 331	913 x 622 x 371
	Weight (kg)	Net Weight (kg)	Indoor	10,3	10,3	13,1
			Outdoor	20,1	20,1	30,1
		Gross Weight (kg)	Indoor	11,7	11,7	14,9
			Outdoor	22	22	32,3
Technical Information	Piping Length	Maximum (M)		15	15	30
	Piping Height	Maximum (M)		8	8	15
	Refrigerant Type			R32	R32	R32
	SVC Valve	Liquid OD		1/4"	1/4"	1/4"
		Gas OD		3/8"	3/8"	1/2"

* Berdasarkan Samsung Internal Specification Data:

- Air Conditioner berada di kondisi Temperatur Standart 22°C - 24°C

- Minimal frekuensi kompresor 50Hz - 35Hz

** Berdasarkan pengujian yang dilakukan di laboratorium Internal. Menghasilkan pengurangan 40% suara pada pita kebisingan sebesar 1kHz, yang merupakan tingkat suara terlemah yang sensitif bagi manusia.





Inverter WindFree™ Lite



Model Code				TKDN CERTIFIED		DIGITAL INVERTER TECHNOLOGY			
				AR10CYFAAWKNSE		AR13BYFANWKNSE		AR18BYFANWKNSE	
Performance	Capacity (Btu/h)	Cooling	10.000 (4.500 - 12.000)		12.000 (4.500 - 14.000)		18.000 (5.000 - 20.000)		
	Capacity (kW)	Cooling	2.93 (1.32 - 3.52)		3.52 (1.32 - 4.1)		5.28 (1.47 - 5.86)		
	ERR/COP (Btu/hW)	EER (Cooling)	11,49		9,60		10,23		
	ERR/COP (W/W)	EER (Cooling)	3,37		2,81		3,00		
Electrical Data	Energy Efficiency	Energy Efficiency Class for cooling (Grade)	★★★★★		★★★★★		★★★★★		
		Operating Current (Cooling, A)	6,5		8,0		11,5		
		Power Consumption (Cooling, W)	350 / 870 / 1.150		350 / 1.250 / 1.350		350 / 1.760 / 2.250		
	Power Source V/ Hz/ Φ		220 - 240V/50Hz/1P		220 - 240V/50Hz/1P		220 - 240V/50Hz/1P		
Physical Specification	Dimension	Net Dimensions (WxHxD)	Indoor	820 x 299 x 215		820 x 299 x 215		889 x 299 x 215	
			Outdoor	660 x 475 x 242		660 x 475 x 242		790 x 548 x 285	
		Gross Dimensions (WxHxD)	Indoor	880 x 290 x 375		880 x 290 x 375		950 x 290 x 375	
			Outdoor	778 x 550 x 331		778 x 550 x 331		913 x 622 x 371	
	Weight (kg)	Net Weight (kg)	Indoor	9,1		9,1		10,1	
			Outdoor	19,0		19,0		30,1	
		Gross Weight (kg)	Indoor	10,4		10,4		11,5	
			Outdoor	20,8		20,8		32,3	
Technical Information	Piping Length	Maximum (M)	15		15		20		
	Piping Height	Maximum (M)	7		7		12		
	Refrigerant Type		R32		R32		R32		
	SVC Valve	Liquid OD	1/4"		1/4"		1/4"		
		Gas OD	3/8"		3/8"		1/2"		

* Berdasarkan pengujian yang dilakukan di laboratorium internal. Menghasilkan pengurangan 40% suara pada pita kebisingan sebesar 1kHz, yang merupakan tingkat suara terlemah yang sensitif bagi manusia.





α Alpha Inverter



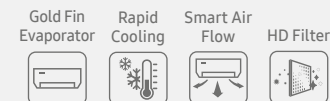
DIGITAL INVERTER TECHNOLOGY

Model Code				AR05AYHLAWKNSE	AR09AYHLAWKNSE	AR12AYHLAWKNSE	AR18AYHLAWKNSE
Performance	Capacity (Btu/h)	Cooling		5.000 (1.706 ~ 6.824)	9.000 (2.050 ~ 10.236)	12.000 (2.730 ~ 12.900)	18.000 (3.420 ~ 18.700)
	Capacity (kW)	Cooling		1.46 (0.5 ~ 2.0)	2.64 (0.6 ~ 3.0)	3.52 (0.8 ~ 3.8)	5.28 (1.0 ~ 5.5)
	ERR/COP (Btu/hW)	EER (Cooling)		10,31	10,65	9.09	9.72
	ERR/COP (W/W)	EER (Cooling)		3.0	3,1	2,7	2,9
Electrical Data	Energy Efficiency	Energy Efficiency Class for cooling (Grade)		★★★★	★★★★	★★★★	★★★★
		Operating Current (Cooling, A)		3.2	5,3	5.8	8.18
		Power Consumption (Cooling, W)		240 / 485 / 1.200	300 / 845 / 1.320	260 / 1320 / 1.550	300 / 1.851 / 2.400
	Power Source V/ Hz/ Φ		220-240V/50Hz/1P	220-240V/50Hz/1P	220-240V/50Hz/1P	220-240V/50Hz/1P	
Physical Specification	Dimension	Net Dimensions (WxHxD)	Indoor	698 × 258 × 200	698 × 258 × 200	782 × 253 × 207	906 × 293 × 215
			Outdoor	777 × 290 × 498	777 × 290 × 498	795 × 305 × 549	853 × 349 × 602
		Gross Dimensions (WxHxD)	Indoor	764 × 325 × 257	764 × 325 × 257	840 × 315 × 260	979 × 372 × 277
			Outdoor	818 × 325 × 535	818 × 325 × 535	835 × 340 × 600	890 × 385 × 645
	Weight (kg)	Net Weight (kg)	Indoor	6.5	7.3	8.0	10.0
			Outdoor	20.0	21.4	23.00	30.0
		Gross Weight (kg)	Indoor	8.0	9.0	9.5	12.5
			Outdoor	20,0	24.0	25.5	33.0
Technical Information	Piping Length	Maximum (M)	15	15	15	15	
	Piping Height	Maximum (M)	5	5	5	5	
	Refrigerant Type		R32	R32	R32	R32	
	SVC Valve	Liquid OD	1/4"	1/4"	1/4"	1/4"	
		Gas OD	3/8"	3/8"	3/8"	1/2"	





Standard R32



Model Code			AR05BGHQASINSE AR05BGHQBSINSE	AR09BGHQASINSE AR09BGHQBSINSE	AR12BGHQASINSE	AR18BGHQASINSE	
Performance	Capacity (Btu/h)	Cooling	4800	9000	11500	17500	
	Capacity (kW)	Cooling	1,41	2,64	3,37	5,13	
	ERR/COP (Btu/hW)	EER (Cooling)	13,72	10,92	10,92	10,75	
	ERR/COP (W/W)	EER (Cooling)	4,02	3,2	3,2	3,15	
Electrical Data	Energy Efficiency	Energy Efficiency Class for cooling (Grade)	★★★	★★★	★★	★★	
		Operating Current (Cooling, A)	1,55	3,65	4,67	7,6	
		Power Consumption (Cooling, W)	350	824	1053	1628	
Power Source V/ Hz/ Φ			220 - 240V/50Hz/1P	220 - 240V/50Hz/1P	220 - 240V/50Hz/1P	220 - 240V/50Hz/1P	
Physical Specification	Dimension	Net Dimensions (WxHxD)	Indoor	715x285x194	805x285x194	805x285x194	957x302x213
			Outdoor	720x495x270	720x495x270	765x555x303	805x554x330
		Gross Dimensions (WxHxD)	Indoor	780x365x270	870x365x270	870x365x270	1035x385x295
			Outdoor	835x540x300	835x540x300	887x610x337	915x615x370
	Weight (kg)	Net Weight (kg)	Indoor	8,2	9,1	9,1	11,8
			Outdoor	20,6	23,1	27	35,4
		Gross Weight (kg)	Indoor	10,1	11,1	11,1	14,9
			Outdoor	22,6	25,2	29,4	38,2
Technical Information	Piping Length	Maximum (M)	20	20	20	25	
	Piping Height	Maximum (M)	8	8	8	10	
	Refrigerant Type		R32	R32	R32	R32	
	SVC Valve	Liquid OD	1/4"	1/4"	1/4"	1/4"	
		Gas OD	3/8"	3/8"	3/8"	1/2"	



Jaminan Service 24 Jam*

Hadir lebih cepat kembalikan performa AC anda



Pelayanan
Cepat



Garansi service
hingga 3 bulan**



Suku Cadang
Original



Teknisi
berpengalaman
& tersertifikasi

Hubungi Kami

0800-1128888



*Syarat & ketentuan berlaku.
**Garansi 1 bulan untuk service & 3 Bulan untuk suku cadang.

4

Langkah
Mudah



Hubungi
Kami



Tunggu
Kami



Kami
Perbaiki



AC Dingin
Kembali

Scan untuk
info lengkap

<http://smsng.co/RACSupport>



PT Samsung Electronics Indonesia

TCC Batavia, Tower One 22nd Floor
Jl. K.H. Mas Mansyur Kav. 126
Jakarta 10220, Indonesia

Permintaan & info lebih lanjut:

Contact Center 24/7



0800 112 8888

www.samsung.com/id/support

Scan untuk
info lengkap



Copyright © Samsung Indonesia, 2024

<http://samsung.com/SACBiz>

Product Disclaimer :

1. Product specifications in the Publication can be changed without prior Because there is always an ongoing improvement on our product
2. Nominal cooling capacities are based on:
 - Indoor temperature : 27°C DB, 19°C WB
 - outdoor temperature : 35°C DB, 24°C WB
 - equivalent refrigerant piping : 5m, Level differences : 0m (on Floor Standing AC)
3. Sound pressure was acquired in an anechoic room on Floor standing AC, Thus actual noise level may be different depending on the installation conditions
4. Some products contain R410A which is fluorinated greenhouse gas

SAMSUNG